

**new
collection**
cersaie2023



CATÁLOGO DE NOVEDADES · NOVELTIES CATALOGUE

butech



Index

Porcelanosa Offsite, 4

Modfaçades, 4
Monobath, 10

Systems, 14

Plots and RAFx accessories, 14
Thic'ker 20MM, 15
Floating stairs, 16

butech products, 18

Gold collection profiles, 19
Chrome collection profiles, 21
Light collection profiles, 23
Decoupling, 24
Eco linear grate kit, 26
Shower deck system, 28

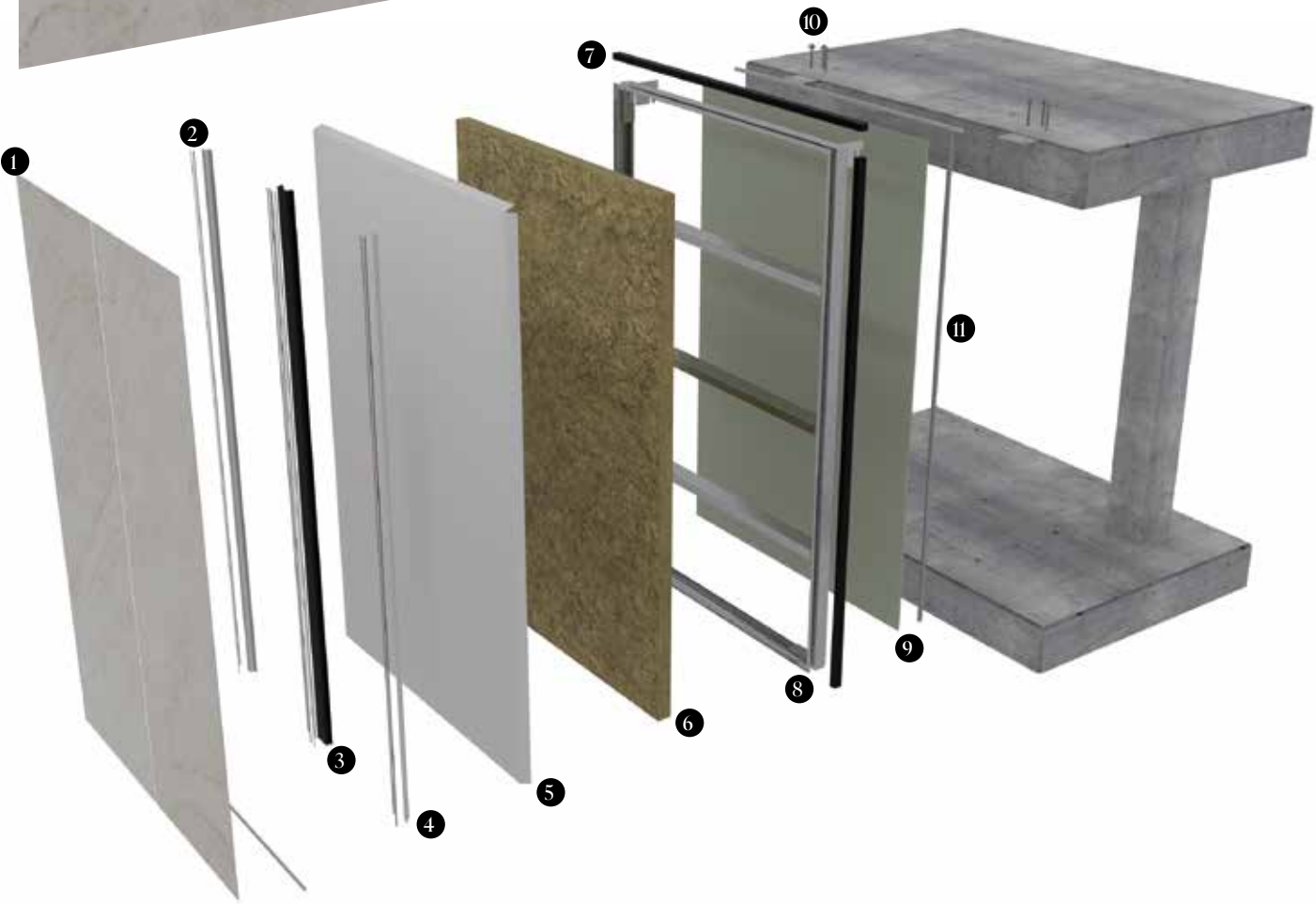
butech inspiration, 30

Watford Football Stadium
Hertfordshire, United Kingdom
Photography Joel Knight



MODFACADES

Innovative lightweight facade construction system, which due to the quickness of its installation and its contribution to the building's energy efficiency, make it a system that adds value to the finished product, for a price lower than traditional construction.



Features for the design and installation of the Modfacades

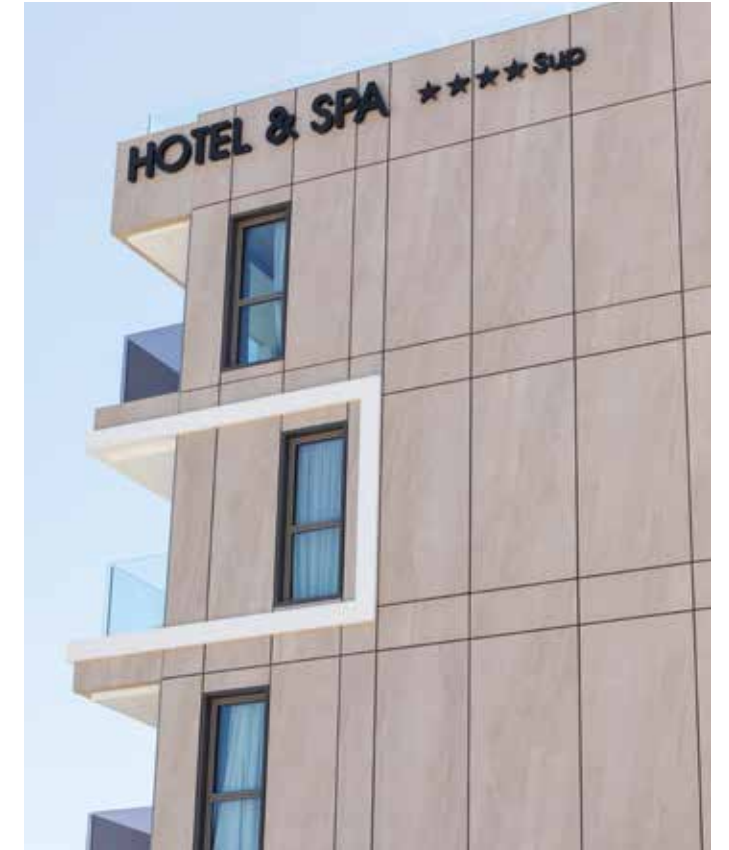
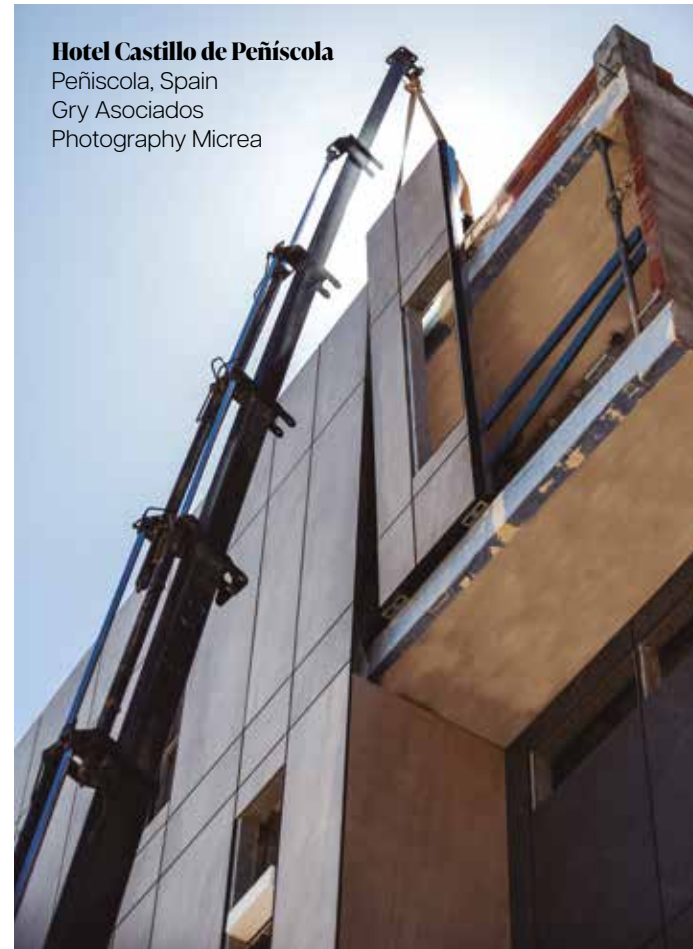
- | | |
|---|---|
| 1. Large format ceramic by PORCELANOSA XLight / XTone | 7. Perimeter frame |
| 2. MS polymer adhesive & double-sided tape | 8. Neoprene joint systems |
| 3. Central Omega profile | 9. Moisture-resistant drywall panel |
| 4. "S" profile on edges | 10. Anchors to floor slab |
| 5. Waterproof membrane | 11. Interior joint backing and silicone sealing |
| 6. Mineral wool 9 cm | |



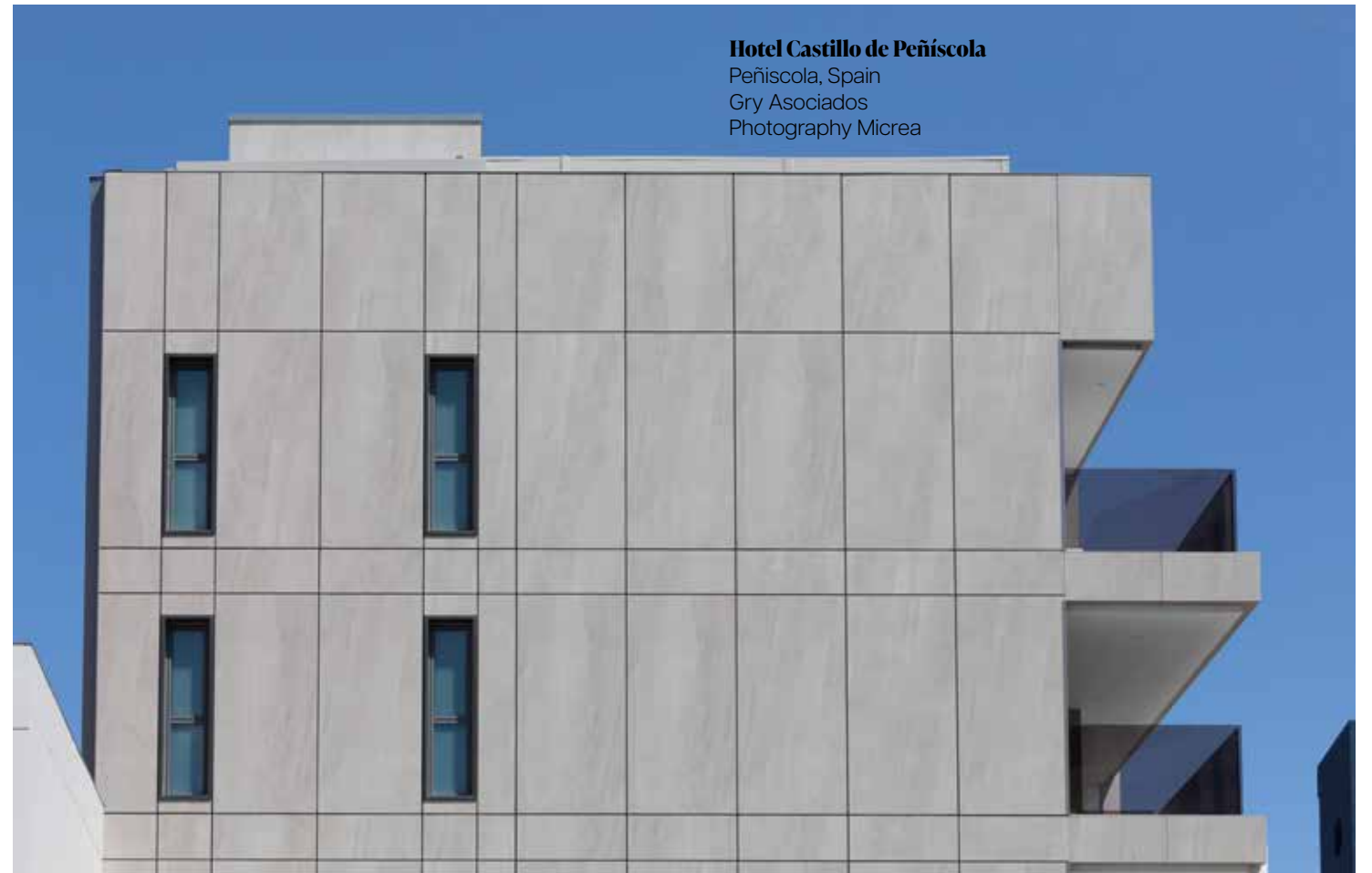
Berkshire House
Maidenhead, United Kingdom
Goddard Manton Architects
Photography AA Creative



Hotel Castillo de Peñíscola
Peñíscola, Spain
Gry Asociados
Photography Micrea



Hotel Castillo de Peñíscola
Peñíscola, Spain
Gry Asociados
Photography Micrea



Production



MONOBATH

Monobath PORCELANOSA, a new concept in industrialized bathrooms

Butech building technology has more than 20 years of experience developing products and systems to support the use of ceramics in building industry. Now we present Monobath, PORCELANOSA 's commitment to the industrialization of bathrooms production.

Monobath is the solution for the production of completely finished baths ready to be installed on site, which brings together the quality of finishes and expertise that characterizes PORCELANOSA Group. We have a modern automated assembly line which further improves the quality of our bathrooms. Monobath is the perfect system for all types of projects such as hotels, hospitals, residential buildings or care homes although it can also be adapted to single-family projects where the highest quality standards are demanded.

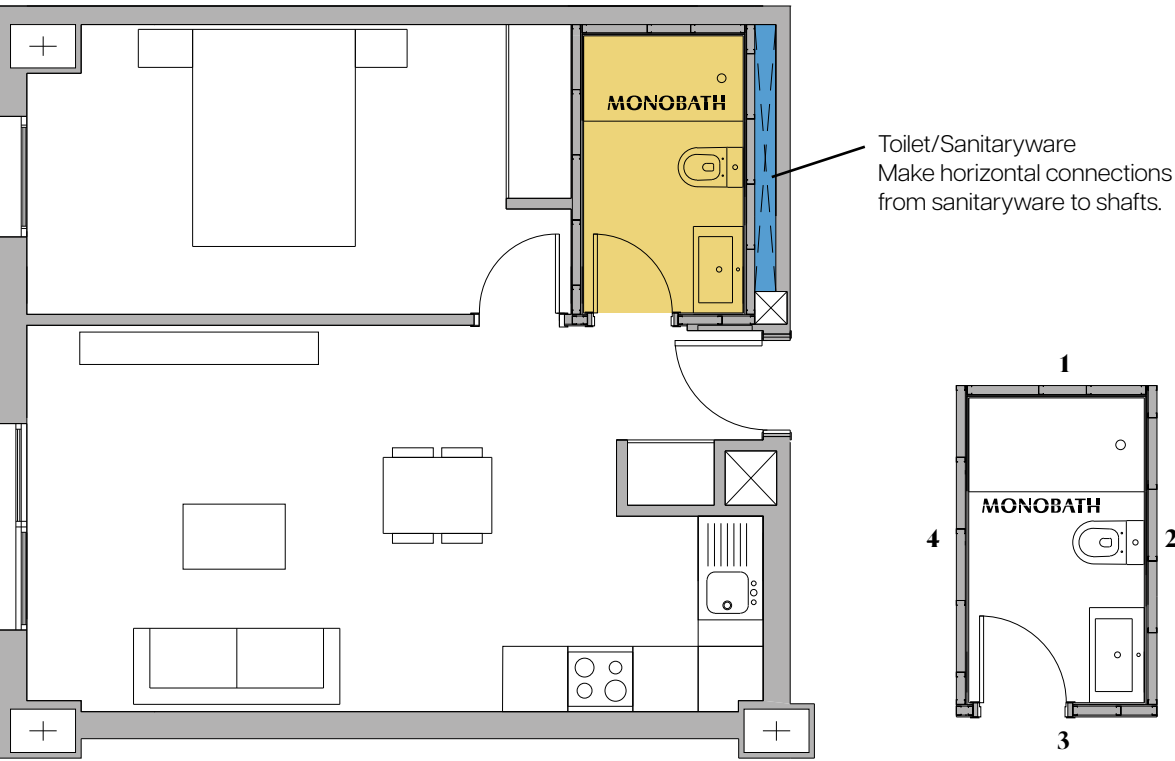
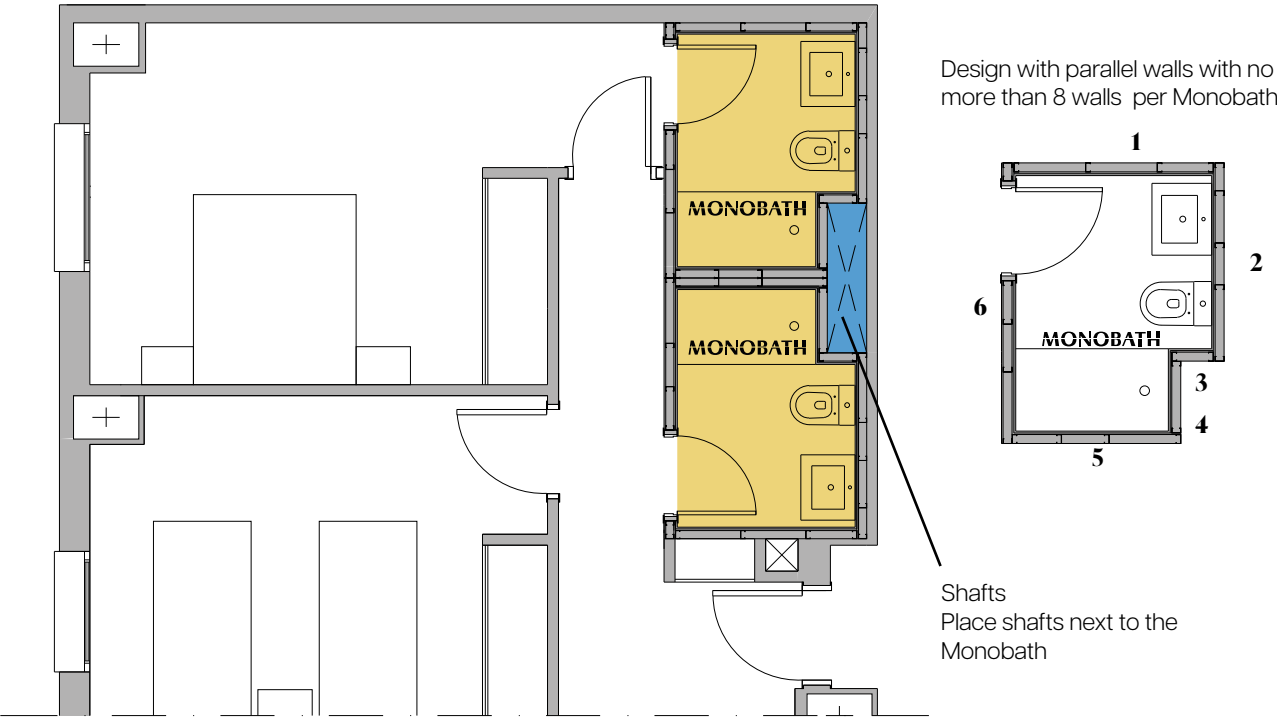
Placing on site



Finishings

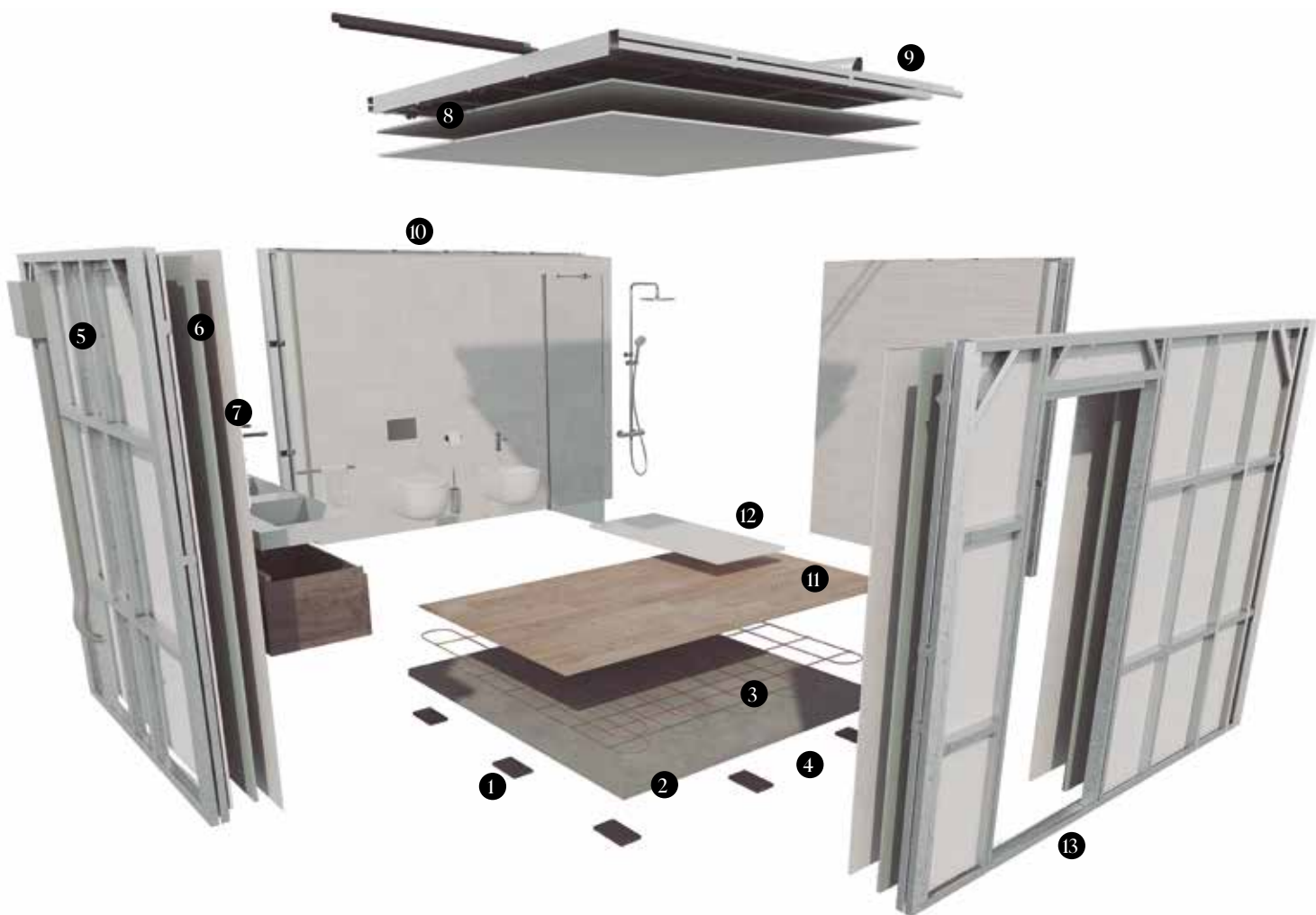


- Example of house floor plan installing monobath. Design recommendations to be taken into account:



1. Features for monobath design and installation

The interior finishings of every monobath will be the result of the customization process of the project, allowing you to choose from the wide range of products and finishings offered by **PORCELANOSA Grupo**.



Features for the design and installation of the Monobath

- 1. Neoprene bases for the Monobath's support above the slab:** 2-20 mm
- 2. Standard base (from 80mm):** 60 mm concrete base + 20mm adhesive and ceramic
- 3. Underfloor heating base option (from 120mm):** 50mm concrete base + 50mm hydraulic underfloor heating + 20mm adhesive and ceramic
- 4. Slim base option (from 30mm):** 12mm base + 18mm adhesive and ceramic
- 5. Wall and ceiling structures:** 75mm steel framing
- 6. Boards:** plasterboards / gypsum fibre / concrete board. As required
- 7. Interior ceramic cladding:** different formats
- 8. Ceiling:** plasterboard panel. Possibility of including registers
- 9. Installations:** Includes lighting, electricity, plumbing and 100mm ventilation above ceiling
- 10. WC option:** grounded, suspended with exposed cistern or embedded (120mm width)
- 11. Interior ceramic flooring:** 20mm approximately
- 12. Shower tray:** Above flooring or wet room shower option
- 13. Door:** Option to include the sliding door frame

MONOBATH

2. Sections

Monobath Base:
80 - 120 mm

Ceramic floor tile:
80 mm

Adhesive + ceramics 20 mm

Concrete slab from 60 mm

Neoprene base 5-20 mm



Ceramic floor + heating floor:
120 mm

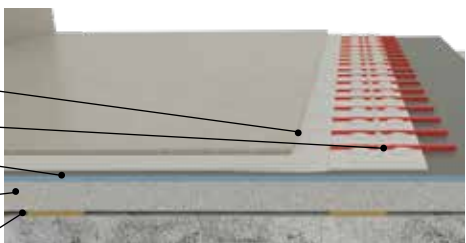
Adhesive + ceramics 20 mm

Heating floor 40 mm

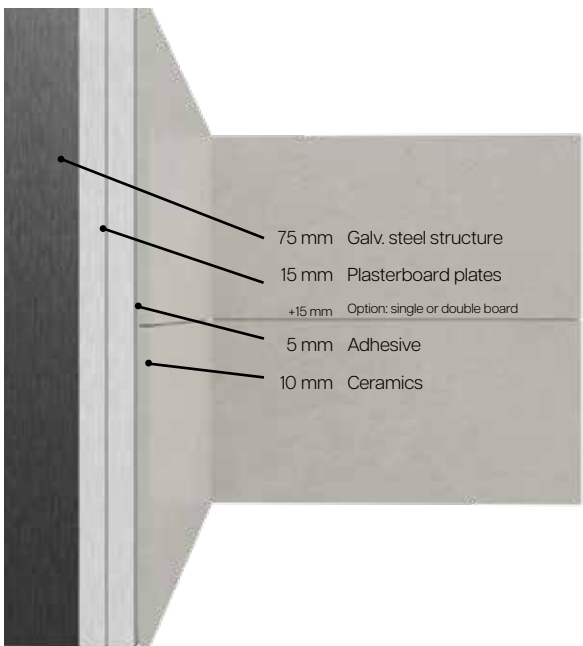
Concept 10 mm

Concret slab from 50 mm

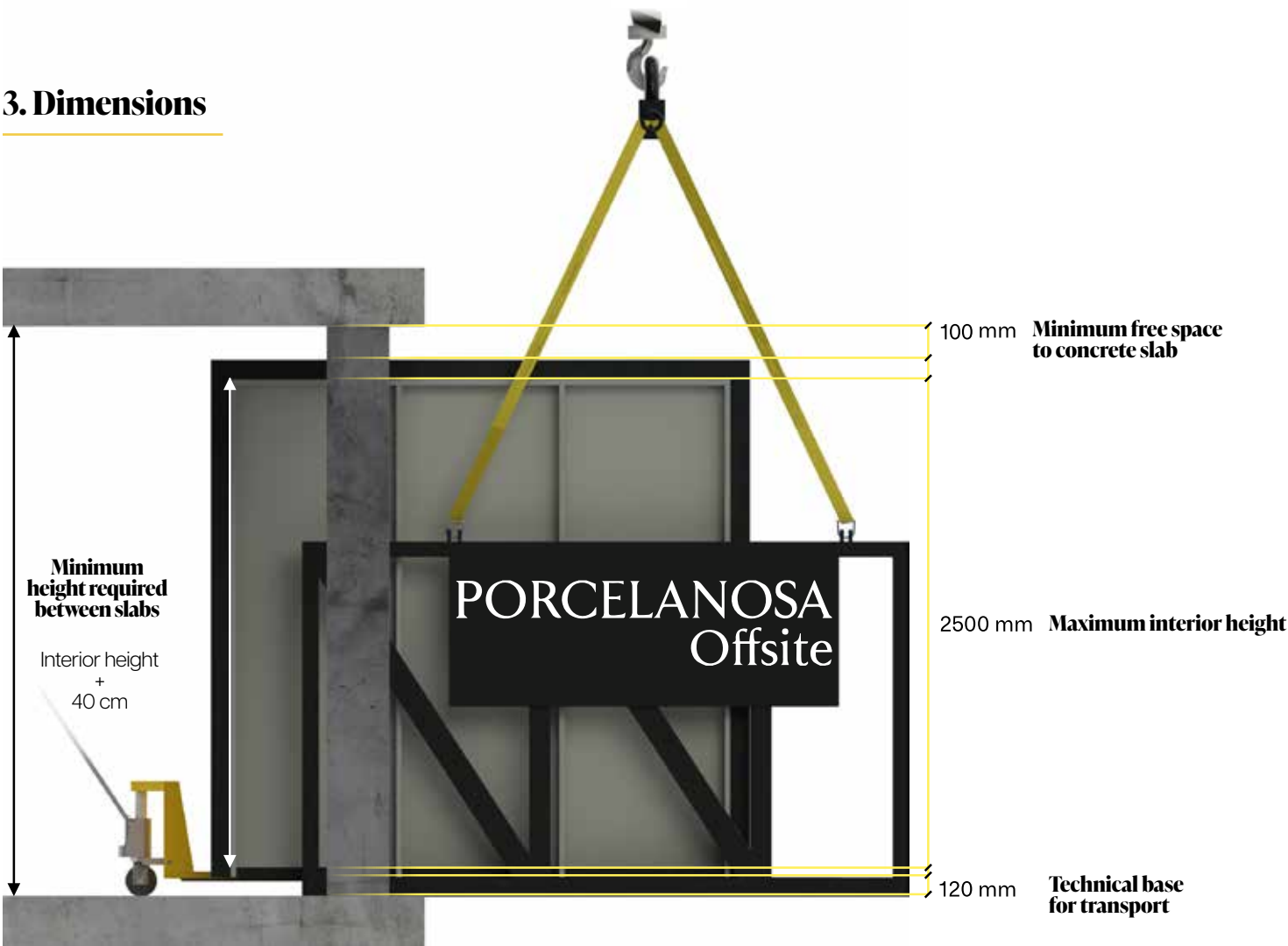
Neoprene base between slabs 5-20 mm



Monobath walls:
Structure + Plasterboard + ceramics



3. Dimensions



Plots and RAFx accessories

Structure of outdoor RAF

Plots with adjustable height:

These plots, made of weatherproof plastic, are the support on which the ceramic tile of outdoor RAF rests. They determine the height of the system and width of the joint between panels. This element consists of the following parts:

- **Plot base:** Large diameter base that distributes the weight on the subfloor.
- **Stem:** Adjustable height rod that allows adapting height of the plot to the needs of the raised floor.
- **Head:** Where outdoor RAF tiles are laid. With 4 spacers that determine grout joints, with a width of 4 mm. Includes a rubber pad on top to reduce impact noise and vibrations.

Optional upgrades:

The Windproof version includes T-shaped(1) and L-shaped clips(2), fixing cap(3) and screw(4). Windproof system is capable to withstand winds up to 212 km/h. Estimated weight 47 kg/m².

Pavers machined with kerf cuts at each corner in order to make them suitable for the windproof system.

Plot N



Plot N Windproof



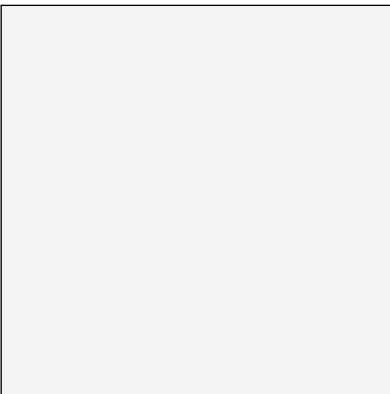
Plots adjustables (Plot N)

Type	Adjustable
Material	Polypropylene with mineral load
Colour	Black
Compression resistance	6172,943 pounds/unit approximately
Dimensions	Lower support base 205 mm Upper head 150 mm
Thread type	Double trapezoidal thread
Heights	Minimum 30 mm Maximum 670 mm
Slopes	From flat to 3 %
Separation between tiles	4 mm

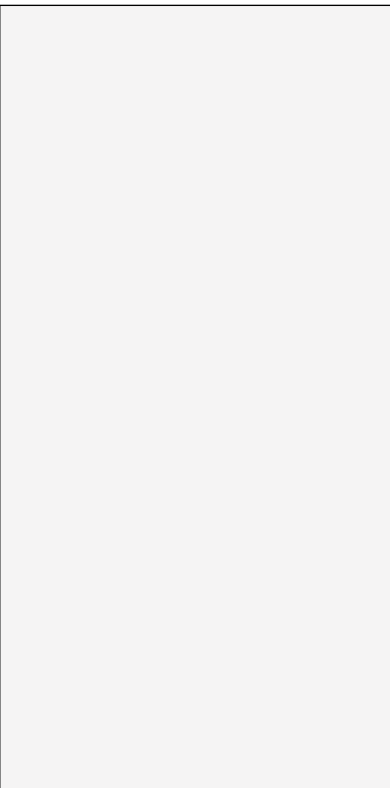
Thicker 20MM

Formats

59,6 x 59,6 cm



60 x 120 cm



29,5 x 120 cm



59,6 x 59,6 cm

Bottega caliza
Bottega acero
Durango bone
Durango acero
Nantes caliza
Nantes acero
Berna caliza
Berna acero
Newport natural
Harlem acero
Prada acero
Vela natural
Rox coal
Rox grey
Rox beige

60 x 120 cm

Bottega caliza
Bottega acero
Durango acero
Berna acero

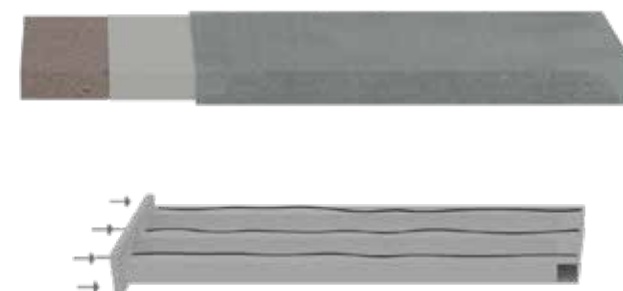
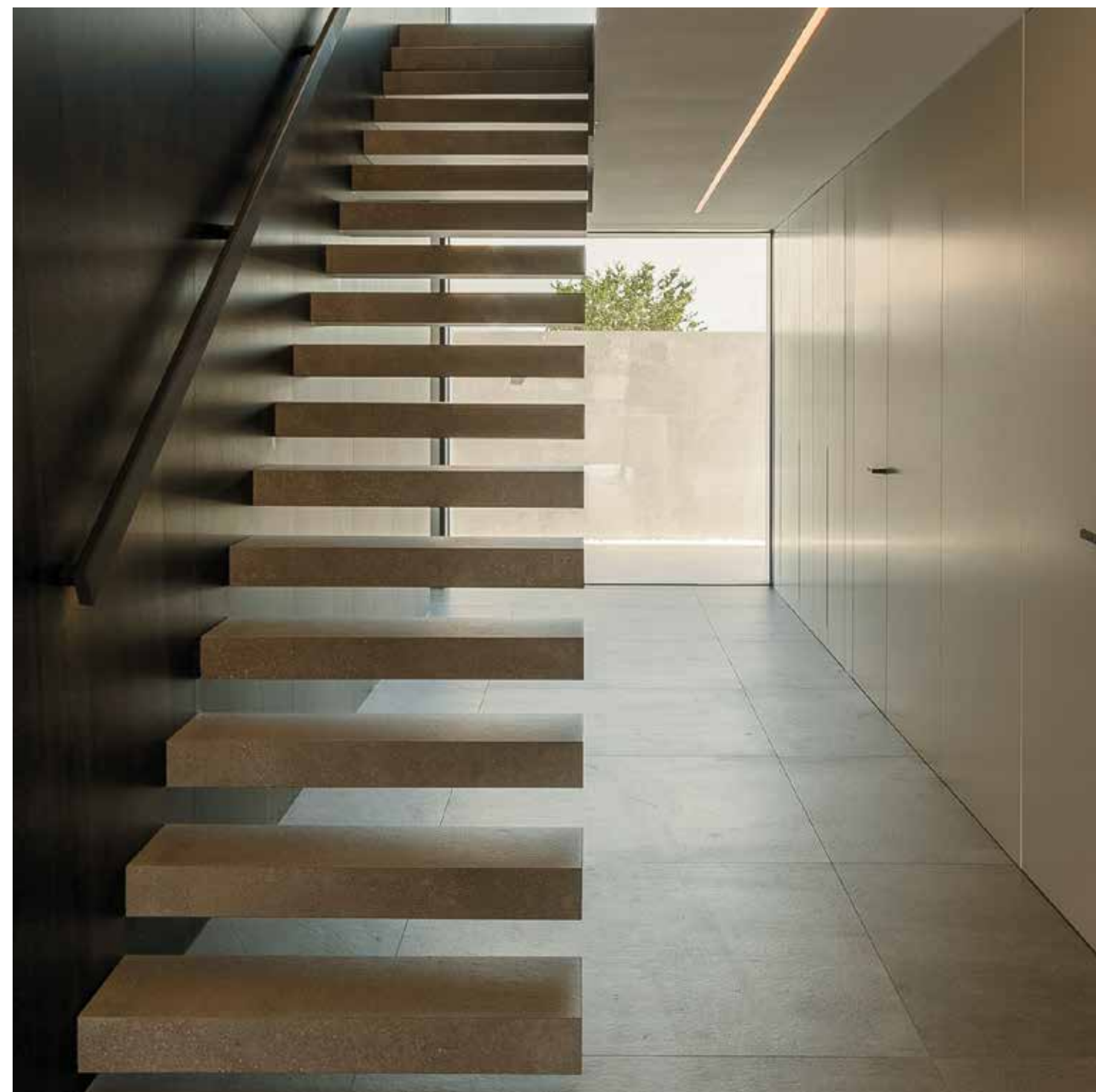
29,5 x 120 cm

Riven white
Riven cream
Riven brown
Tanzania white
Tanzania silver
Tanzania nut
Tanzania almond
Tanzania natural





Floating stairs



Features

Customized steps are available, but the standard measurements are:

- Length: 80 / 90 / 100 / 120 cm
- Width: Approx. 28 cm depending on tile thickness
- Thickness: Greater than 9 cm

This system is designed to be used primarily indoors, but can be adapted to outdoor projects.



Decorative profiles
Gold Collection

pro-part gold line

Brushed gold finish profile. 8 mm decorative trim.



pro-part gold line 11 mm 100339564 8x11x2500 mm



Decorative profiles
Chrome Collection

pro-part chrome

Chromed brass decorative profile for wall tiles.



pro-part chrome 7 mm	100005368	8x7x2500 mm
pro-part chrome 9 mm	100005369	8x9x2500 mm
pro-part chrome 11 mm	100286618	8x11x3000 mm

pro-part Li chrome

Chromed brass decorative profile for wall tiles.



pro-part Li 11 mm	100070170	12x11x2500mm
pro-part Li 12,5 mm	100070171	12x12,5x2500mm

pro-mate 5 chrome

Chromed brass decorative profile for wall tiles.



pro-mate 5 chrome 7 mm	100126779	5x7x2500 mm
pro-mate 5 chrome 9 mm	100004945	8x9x2500 mm
pro-mate 5chrome 11 mm	100286603	5x11x3000 mm

pro-mate 3 chrome

Chromed brass decorative profile for wall tiles.



pro-mate 3 chrome 6 mm	100126772	3x6x2500 mm
pro-mate 3 chrome 9 mm	100004952	3x9x2500 mm
pro-mate 3 chrome 12.5 mm	100286309	3x12,5x3000 mm

Aluminum Collection

pro-part black

Aluminum profile



pro-part black 7 mm	100220100	8x7x2500 mm
pro-part black 9 mm	100325883	8x9x2500 mm
pro-part black 11 mm	100171975	8x12,5x2500 mm

pro-part white matt

Aluminum profile



pro-part white matt 9 mm	100332940	8x9x2500 mm
pro-part white matt 11 mm	100296752	8x11x2500 mm
pro-part white matt 12,5 mm	100286598	8x12,5x2500 mm



LED profiles
Light Collection

Decorative profile. Luminescent range for ceramic coverings

pro-light 7.5 mm



pro-light silver 7.5 mm	100243677	21x7.5x2500 mm
pro-light black 7.5 mm	100243703	21x7.5x2500 mm

pro-light silver 11 mm



pro-light silver 11mm	100202237	27x11x2500 mm
-----------------------	-----------	---------------

pro-mate 45 TOP light



pro-mate 45 TOP light	100243649	22.5x22.5x2500 mm
-----------------------	-----------	-------------------

pro-skirting LED



pro-skirting LED black	100200414	60x1,2x2500 mm
pro-skirting LED silver	100200403	60x1,2x2500 mm
pro-skirting LED white	100200418	60x1,2x2500 mm

pro-telo light

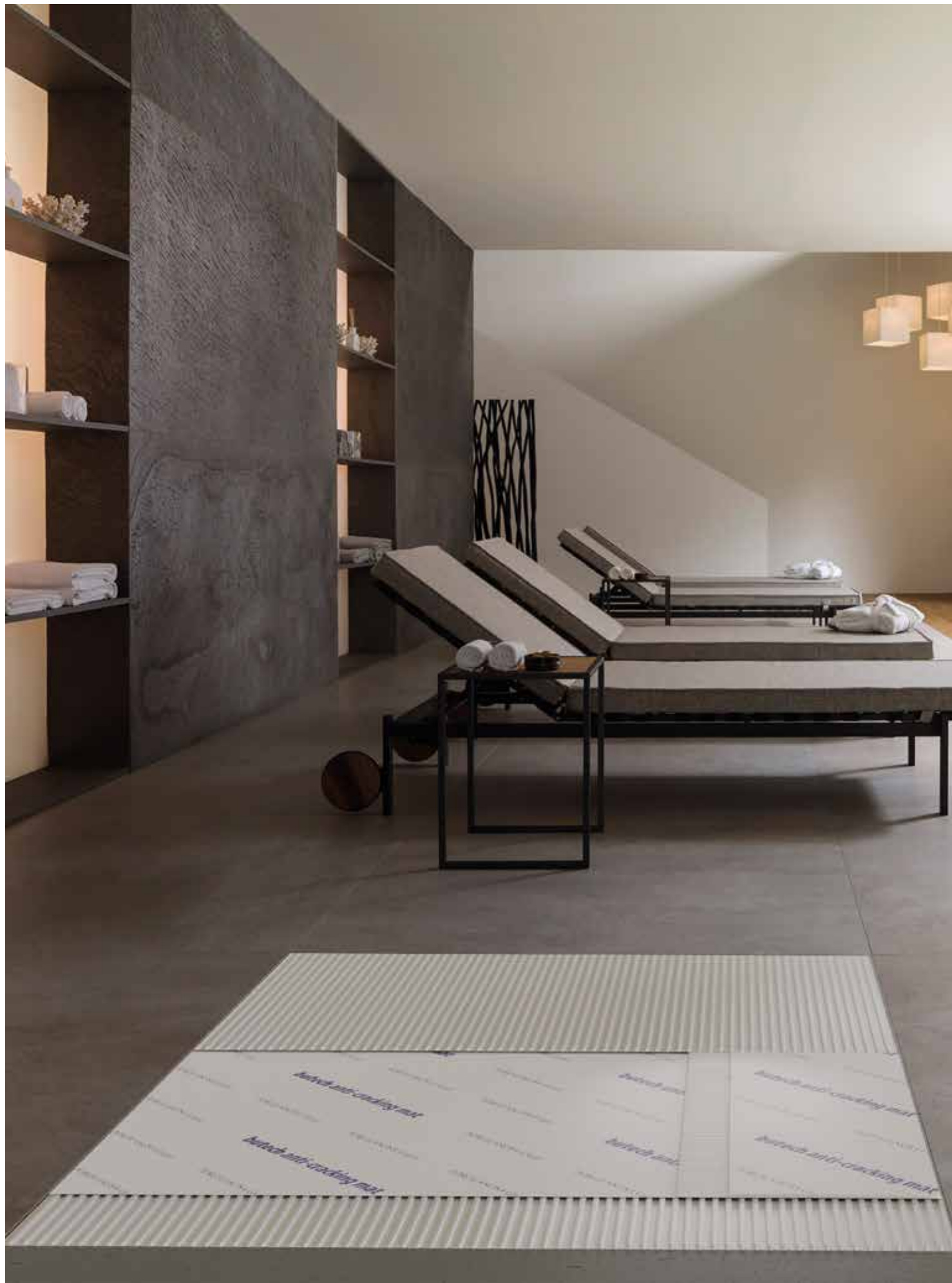


pro-telo light silver	100281600	15x12x3000 mm
pro-telo light black	100281601	15x12x3000 mm

pro-telo light slim



pro-telo light slim silver	100328096	16x5.5x2500 mm
pro-telo light slim black	100328075	16x5.5x2500 mm



Decoupling



anti-cracking mat

Decoupling sheet for floors undergoing low and medium movements.

This membrane reduces the transfer of tensions and stresses between the substrate and the flooring, protects the flooring against the appearance of cracks caused by sideways movements between the slabs forming the substrate and allows porcelain or natural stone flooring to be laid on substrates with medium and low movements. Especially recommended on floors built with timber panels.

anti-cracking mat 100227223 roll 15 m²



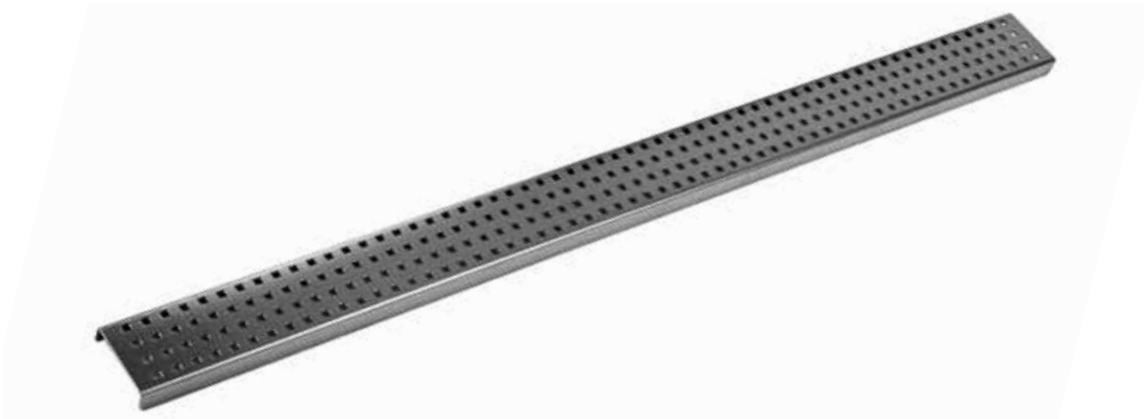
texture-revs 250066211 600 x 60 mm



chrome 250066212 600 x 60 mm

butech products

Eco linear grate kit



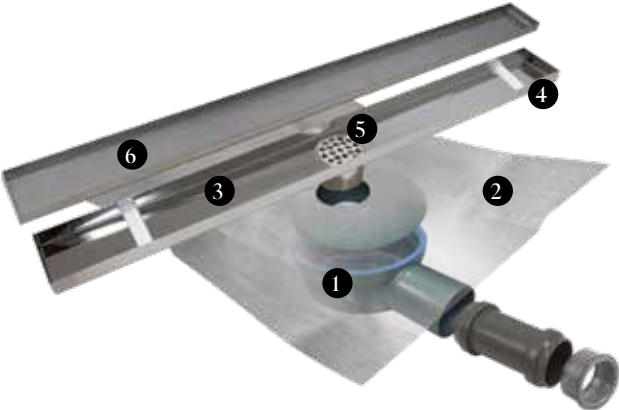
square 250066212 600 x 60 mm



matt black 250066212 600 x 60 mm



line n 250066215 600 x 60 mm



- Eco linear grate kit**
- 1. Drain
 - 2. **imperband eco** membrane thermally sealed to the drain
 - 3. Channel
 - 4. Grate supports
 - 5. Filter
 - 6. Stainless steel grate

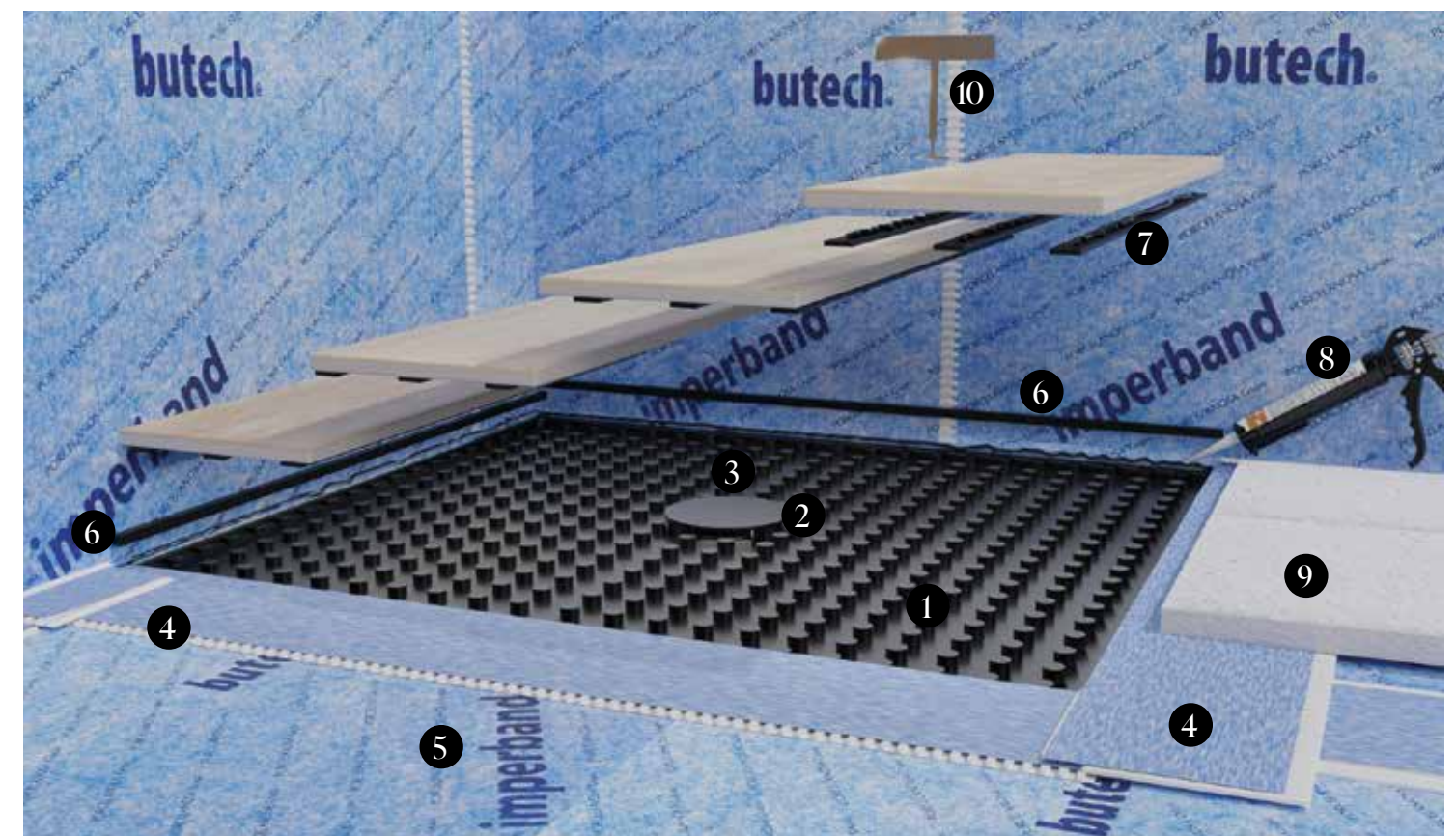


butech products

Shower trays shower deck system

New shower tray concept with concealed drain for the most exclusive bathrooms. This innovative shower tray system lets us create a sense of continuity with the rest of the bathroom floor because the slopes are concealed under the floor. Drainage is achieved through the open joints and does not require the installation of an evacuation grid.

The **shower deck system** is a shower tray made up by a polyurethane base coated with thermoset polymers, especially designed to to have ceramic plates installed. Specially recommended for bathroom renovations.



1. **shower deck**. Thickness: 30mm
2. Non-return horizontal siphonic drain. Height 60mm. Outlet Ø 40mm and 0.52 l/s
3. Drain reinforcement piece.
4. **lamiband 200**, 5 linear meters roll (1 unit)
5. **imperband**, 5 linear meters roll (1 unit)
6. PVC leveling profiles 14X14X2 units of length + 1 unit of width of the plate (Max. 2,000 mm) (3 units).
7. Ceramic joint profiles 30x4xLength of the plate, max. 2,000 mm (quantity varies depending on the chosen ceramic width)
8. **p-404**
9. Protection sheet
10. Tile lifting tool



butech inspiration



100336888 Mystic grey 120 x 120 cm • 100201543 one-flex Premium • 100236449 colorstuk rapid cement n
100108034 self-leveling spacers kit 1 mm • 100082628 fonopac r • 100005465 pro-T inox cepillado 25 mm



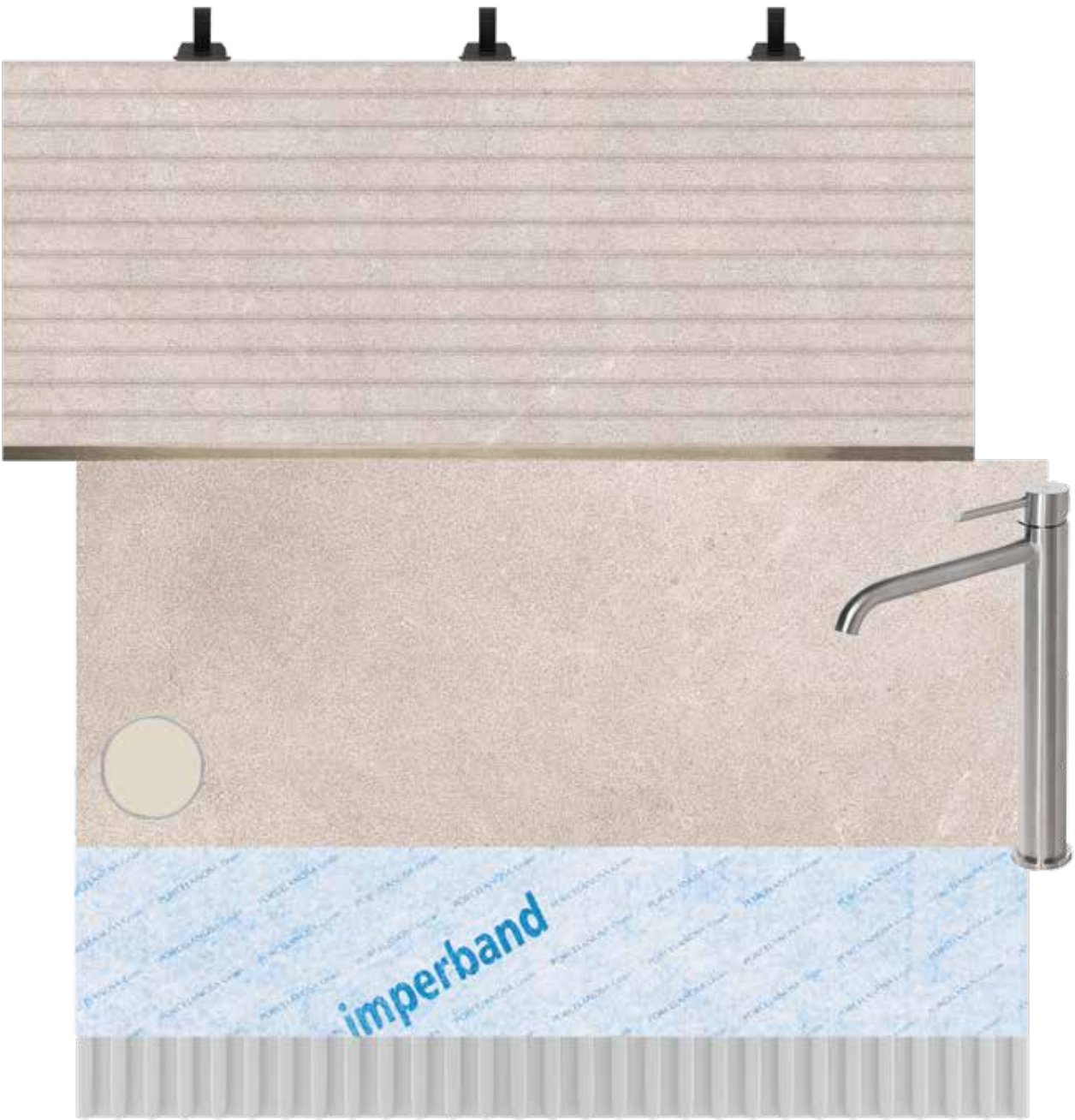
butech inspiration



100330176 Coral caliza 120 x 120 cm • 100201543 one-flex Premium • 100236794 colorstuk rapid marfil n
100109073 self-leveling spacers kit 2 mm • 100227223 anti-cracking mat
100243964 pro-part old bronze • 100289252 Lavabo Lignage cobre cepillado



butech inspiration



100330296 Savannah caliza 59,6 x 150 cm • 100330300 Deco Savannah caliza 59,6 x 150 cm • 100201543 one-flex Premium
100109073 self-leveling spacers kit 2 mm • 100276193 imperband 30m² • 100331788 colorstuk rapid caliza n
100157798 pro-part line matt • 100283299 Monomando Round Inox



butech inspiration



100332539 **Xtone Nylo noir 120 x 270 cm** • 100245281 **Berna acero 45 x 120 cm** • 100004241 **fr-one blanco n**
 100142757 **super-flex S2** • 100213808 **self-leveling spacers kit 0,5 mm** • 100227223 **anti-cracking mat**
 100103350 **concept xps panel** • 100236464 **colorstuk rapid manhattan n** • 100238251 **colorstuk especial dark n**



butech inspiration



100240998 **Ars beige nature 150 x 300 mm** • 100142757 **super-flex S2 15 kg** • 100236806 **colorstuk 0-4 n gris**
100108034 **self-leveling spacers kit 1 mm** • 100316193 **sylastic Premium 15 kg** • 100005370 **pro-part chrome 11 mm**
100208352 **Monom. round chrome**



Commitment with the environment

All our products are manufactured with at least 40% recycled material, contributing to the realization of sustainable and self-sufficient projects from an energetic point of view and hit the requirements of LEED certification (Leadership in Energy and Environmental Design) and BREEAM (Building Research Establishment Environmental Assessment Method) in recycled material content, without VOC emissions and 100% recyclable reuse. XTONE products have a low environmental impact throughout their entire life cycle.

PORCELANOSA S.A.U.

Reserves the right to modify and/or discontinue certain models displayed in this catalogue. The colours and finishes of tiles shown in the catalogue may differ slightly from the originals. The settings shown in this catalogue are design proposals for advertising purposes. In real situations in which the tiles are laid, the installation instructions published by PORCELANOSA should be followed. It is agreed that weights, dimensions, capacities, prices, performances, colours and other data contained in catalogues, prospects, circulars, illustrations, price-lists or other illustrative seller's documents, shall all constitute an approximate guide only.

International Exhibition of Ceramic Tile and Bathroom Furnishings 2023. Edition 1

© 2023 BUTECH Building Technology, S.A.U.

Ctra. Villarreal - Puebla de Arenoso
(CV-20) Km 2,5. Vila-real (Spain)
+34 964 53 62 00 · butech@butech.es

www.butech.es

